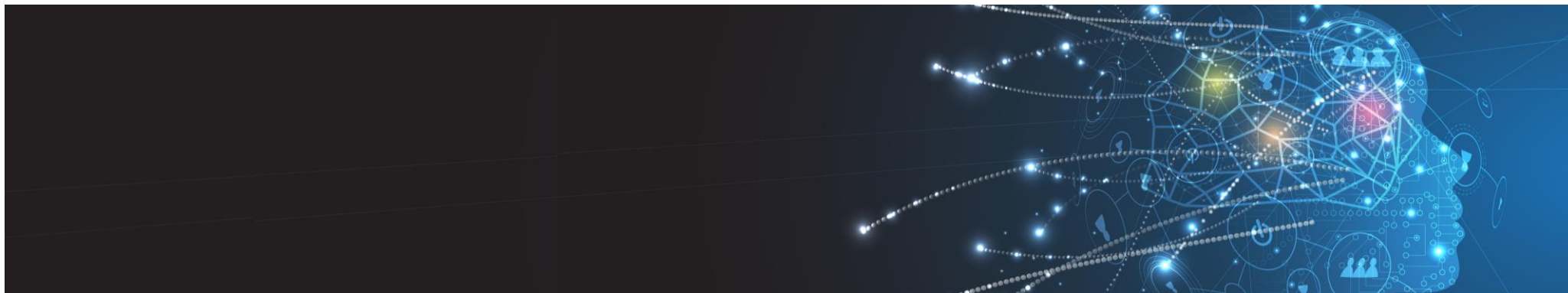



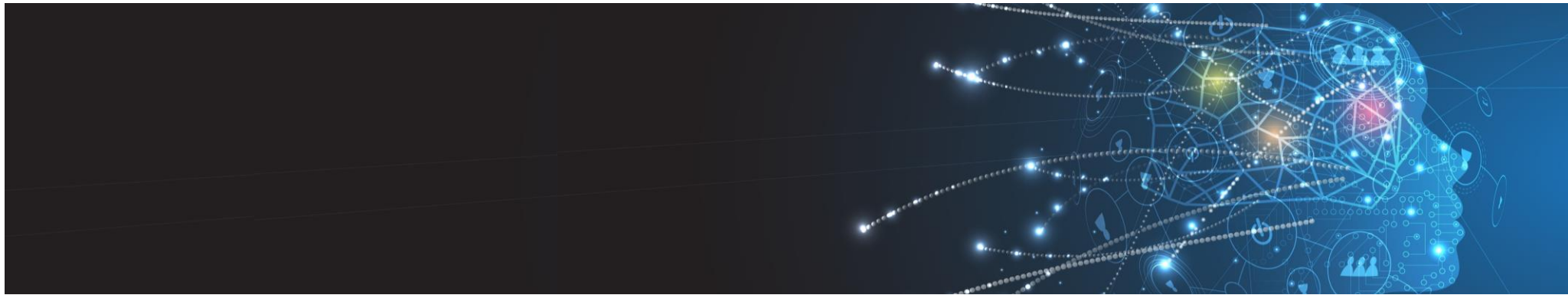




<b>Target Group</b>	All employees, with previous knowledge from the field of Data. The prerequisites vary according to the objectives of the respective learning path and can be found in the individual role and course descriptions.		
<b>Format</b>	<ul style="list-style-type: none"> <li>• Online training on the Coursera learning platform</li> </ul>	<ul style="list-style-type: none"> <li>• Online training on the Udacity learning platform</li> </ul>	<ul style="list-style-type: none"> <li>• Virtual instructor-led trainings + free online resources</li> </ul>
<b>Content &amp; Methods</b>	<ul style="list-style-type: none"> <li>• Content from international top universities (partly accredited) and tech companies</li> <li>• Individual start and end dates</li> <li>• Learning community with discussion platforms</li> <li>• Interactive modules (quizzes, exercises)</li> <li>• Peer-to-peer tasks</li> <li>• Mobile learning using the app</li> </ul>	<ul style="list-style-type: none"> <li>• Content from leading tech companies and Udacity experts</li> <li>• Joint start and end dates within a group</li> <li>• Individual learning plan</li> <li>• Learning community with discussion platforms</li> <li>• Interactive modules (quizzes, practical exercise tasks)</li> <li>• Specific practical projects</li> <li>• Personal mentoring by mentors</li> </ul>	<ul style="list-style-type: none"> <li>• Content straight from the leading cloud provider's training organization</li> <li>• Individual virtual classes delivered by Microsoft certified trainers</li> <li>• Free online resources for further self-study</li> </ul>



			
<b>Certificate</b>	<ul style="list-style-type: none"> <li>• Upon completion of the course, a certificate is awarded from the university/the company which offered the course</li> <li>• No completion in a specific time period required to gain a certificate</li> </ul>	<ul style="list-style-type: none"> <li>• Upon completion of all courses and projects, a Udacity Nanodegree is awarded</li> <li>• Program should be completed within six months to gain a Nanodegree. Licenses can be extended after expiration</li> </ul>	<ul style="list-style-type: none"> <li>• Bertelsmann learners get a 100% discount on any exam fees incurred for Microsoft official certification exams. To further reward your efforts, you will get a refund of your full license costs with Bertelsmann University upon successful completion of a Microsoft exam</li> </ul>
<b>Start Date</b>	<ul style="list-style-type: none"> <li>• Four start dates per year</li> </ul>	<ul style="list-style-type: none"> <li>• Two start dates per year</li> </ul>	<ul style="list-style-type: none"> <li>• Individual training dates</li> </ul>
	<ul style="list-style-type: none"> <li>• Start dates or training dates will be announced on peoplenet and the Bertelsmann University website</li> </ul>		
<b>Cost</b> (All licenses can be booked via peoplenet)	<ul style="list-style-type: none"> <li>• €339 for an annual license</li> </ul>	<ul style="list-style-type: none"> <li>• €1,950 for a six-month license</li> </ul>	<ul style="list-style-type: none"> <li>• €99 starter price for an annual license that grants access to all virtual live trainings. A full refund is available upon successful completion of a Microsoft certification exam</li> </ul>
<b>License Duration</b>	<ul style="list-style-type: none"> <li>• The license is valid for one year after registration on the Coursera platform</li> </ul>	<ul style="list-style-type: none"> <li>• The license is valid for six months after the course begins</li> </ul>	<ul style="list-style-type: none"> <li>• The license is valid for one year after registration on the Microsoft platform</li> </ul>
<b>License Scope</b>	<ul style="list-style-type: none"> <li>• Access to the curated learning paths for all the cloud roles and the entire Coursera catalog</li> </ul>	<ul style="list-style-type: none"> <li>• Access to the purchased Nanodegree program</li> </ul>	<ul style="list-style-type: none"> <li>• Access to the entire Microsoft Enterprise training catalog</li> </ul>



			
<b>Time Indication / Investment</b>	<ul style="list-style-type: none"> <li>• 1-6 weeks, to complete a course</li> <li>• An average of approx. 20 hours per course</li> </ul>	<ul style="list-style-type: none"> <li>• Max. 6 months to complete the Nanodegree</li> <li>• An average of 5-10 hours per week</li> </ul>	<ul style="list-style-type: none"> <li>• Fixed duration depending on the chosen course. Courses may be one or more days long</li> </ul>
<b>Learning paths</b> Do courses build upon each other?	<ul style="list-style-type: none"> <li>• The learning paths are curated collections of topics</li> <li>• The individual courses do not build upon each other</li> <li>• Specialization courses do build upon each other</li> </ul>	<ul style="list-style-type: none"> <li>• The learning paths consist of various Nanodegree programs which do not build upon each other</li> <li>• Within the Nanodegree the courses do build upon each other</li> </ul>	<ul style="list-style-type: none"> <li>• The individual courses do not build upon each other. However, we encourage that courses are taken in the order suggested by the learning path if learners pursue an official Microsoft certificate</li> </ul>
<b>Program Languages</b>	<ul style="list-style-type: none"> <li>• English</li> <li>• Subtitles in other languages for 95% of the courses</li> </ul>	<ul style="list-style-type: none"> <li>• English</li> <li>• English subtitles</li> </ul>	<ul style="list-style-type: none"> <li>• Mainly English</li> <li>• Other languages may be available (depending on the chosen course)</li> <li>• Additional study material in a wide range of languages</li> </ul>